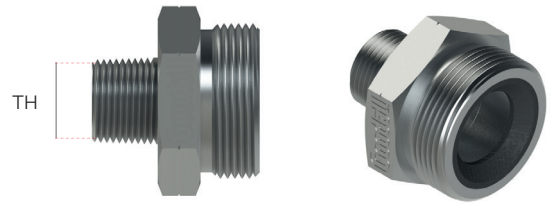


GDS-GJMS-A-B01
 GOODALL DURACRIMP
 GROUND JOINT MALE SPUD BSPT



APPLICATION :

- Goodall DuraCrimp couplings are recommended as steam hose connections.
- These couplings are also widely used for air and water applications up to 1"ID.

PRESSURE AND TEMPERATURE:

- Recommended for steam service up to 261 PSI (18 BAR) and 450°F (232°C)

SEALING:

- Metal-to-PTFE polymer

MATERIAL :

- Galvanized steel, Cr6-free

THREAD :

- According EN 10226-1:2004 (BSPT)

FEATURES :

- The spud part of the coupling is one half of the Goodall DuraCrimp Ground Joint connection and is usually fixed to the installation or machine. The stem part that is clamped to the hose and the wingnut is the other half.
- The two halves are connected by rotating the wing nut on the spud. When connected a leak-proof seal between the metal head of the stem and the special PTFE-polymer seat in the spud is achieved
- All galvanized steel DuraCrimp fittings and ferrules are Cr6-free with no negative impact on the environment and users
- Safe and easy to seal

TYPE: GDS-GJMS-A-B01

Code	Thread (TH)
GDS-GJMS-A-1/2"-B01	1/2" BSPT
GDS-GJMS-A-3/4"-B01	3/4" BSPT
GDS-GJMS-A-1"-B01	1" BSPT
GDS-GJMS-A-1 1/2"-B01	1 1/2" BSPT
GDS-GJMS-A-2"-B01	2" BSPT

All information contained on this datasheet is subject to change without prior notice. GOODALL MAKES NO WARRANTIES, EXPRESSED OR IMPLIED, INCLUDING, BUT NOT LIMITED TO, ANY IMPLIED WARRANTY OF MERCHANTABILITY OR FITNESS FOR A PARTICULAR PURPOSE OR COURSE OF PERFORMANCE OR USAGE OF TRADE. Buyer/end-user is responsible for determining whether the Goodall product is fit for a particular purpose and suitable for buyer's/user's method of use or application. Failure to follow procedures for selection, installation, care, maintenance and storage of hoses may result in the hose's failure to perform properly and may result in damage to property and/or serious injury. Goodall or any of its affiliates or subsidiaries shall not be subject to and disclaims any obligations or liabilities (including but not limited to all consequential, incidental and contingent damages) arising from tort claims (including without limitation negligence and strict liability) or other theories of law.